

APLE SCHOOLS
2026



ACCREDITED PLAN FOR LEARNING ENVIRONMENTS



Online Instruction

Onsite Only Instruction (High School)

Hybrid Instruction (High School)

Summer Cohort & Self-Paced Classes

Supplemental Courses



INSPIRE • TRANSFORM • SERVE

*Full information at griggs.edu (NAD SERVICES)



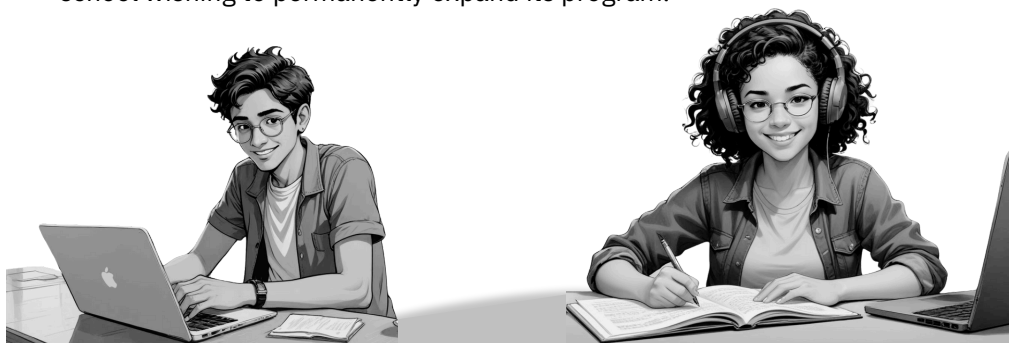
Griggs' APLE (Accredited Program for Learning Environments) is a tool used to enrich or assist North America Division (NAD) Elementary, Junior and Senior Academies with curriculum and teachers.

APLE was developed cooperatively by the North American Division Office of Education (NADOE) and Griggs International Academy to meet the needs of students unwilling or unable to go to a boarding academy hundreds of miles away.

By enrolling in the APLE program, NAD schools are able to use a combination of Griggs and local school resources to offer grades 9-12 to students who might otherwise enter the public school system. It is designed to fit the traditional school year schedule.

Griggs has a multi-tiered Learning Management System (LMS) that allows our partners, teachers, supervisors and students to be directly involved in students' progress. This portal enhances the way Griggs communicates and manages the Adventist schools who partner with us.

On occasion, and with approval from both conference and union, schools may offer a complete high school curriculum using the APLE program. Students of these schools receive Griggs (Maryland state-approved) diplomas. The APLE program may be viewed as an interim solution for a school wishing to permanently expand its program.



Partnerships between Griggs and Adventist schools must be approved by the local conference and union education departments prior to the start of school.

We are honored to be an online school with flexibility to serve students around the world. This enables us to specifically support the North American Division (NAD) schools. Due to the generosity of the North American Division Office of Education (NADOE), we can offer discounts to NAD schools who partner with us in providing supplemental courses, an entire curriculum online, or assistance with transcribing on-site courses.

Griggs courses are asynchronous, and we have many synchronous elements as part of our program as well. APLE students are encouraged to join our live events whenever possible. These include chapels, workshops, and mentor groups throughout the week. While not required, many APLE School students enjoy the benefits of these events.

Students are required to meet with their teachers at certain points in many of our courses. It is our goal to be partners with schools and families to help students be successful. Since this partnership includes the element of online learning, students have the chance to be in the “driver’s seat” for their education. With that said, as adults, we need to provide the support and accountability that students need for academic success. It takes all of us to make this happen. Students are the center of the process.

The teachers and facilitators at schools who partner with us have an important responsibility to monitor students’ progress and to create a positive environment suitable for effective learning. Each school has a unique program, but it should be much like a regular class in the building. The facilitator is responsible for making this happen and Griggs provides training and mentoring to help things go well. The success of the program depends on whether the school and facilitator follow the APLE guidelines and training suggestions. Lack of supervision or adult engagement in the APLE program classroom causes a less than desirable experience and outcome.

Please feel free to contact us with questions. You and your students are the most important part of the services we offer.

La Ronda Curtis Forsey
Associate Dean, Global Campus
Griggs Principal

laronda@andrews.edu
Text Only: 301-526-6369



The Griggs website provides students and parents access to valuable resources and the latest news. We continually evolve to provide the best service and education to our students.

www.griggs.edu



Catalog/Handbook

View policies, procedures, scope and sequence, and new courses with course descriptions in our catalog/handbook on our website.



Griggs Online

We use D2L Brightspace learning management system. With a user-friendly interface, students are able to navigate their courses, interact with teachers, view grades, get announcements, and much more!



Student Connections

Students can easily connect with teachers and students. Griggs allows for a flexible learning program to meet the needs of your school, while providing synchronous group activities to enrich learning and connectivity.



Meet with Teachers

Students can work as a cohort group using Griggs online classes. Students will be assigned to schedule a Zoom meeting with the teacher for a 1:1 meeting called a Discussion Based Assessment (DBA)



Pacing Charts

Facilitators and students are with provided printable pacing charts that should be filled out with due dates for the assignments that fit the schedule of the school and assure that work will be completed on time.

High School APLE SCHOOL TUITION & FEES

Prices listed reflect current rates and are subject to change

School Application Fee \$200

Per Student Fees

Student Enrollment Fee \$ 55

Tuition (semester/student/course) \$255

Recording Fee (Griggs on-site course) \$ 65

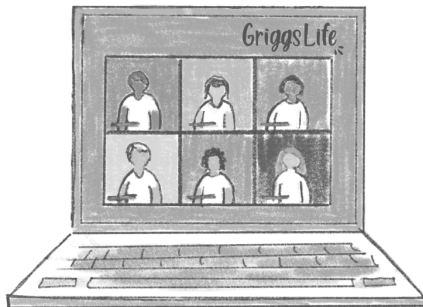
eTextbooks (each) \$ 35

Miscellaneous (See Packet Online)

*Full-Service is approximately \$3200 per year/per student

*Reduce cost by offering pre-approved on-site classes

^This fee schedule is current as of July 1, 2025



Please note the technology requirements for grades 6-12. In order to perform well in a Griggs online course, each student will need access to a computer with:

- High-speed uninterrupted internet access (15Mbps+ recommended)
- Hardware: 4GB+ RAM, 1920x1080+ screen resolution, speakers, webcam, and microphone. Scanner is strongly suggested for K–8 students
- Operating System: PC Windows 11 and newer, Mac OSX 12 and newer.
- Tablet and mobile devices are supported but some functionality is limited. This should not be your primary way of accessing the course.
- No proctored tests can be taken on a tablet or mobile device.
- Use of Chromebooks is not supported due to operating system compatibility issues with Griggs online.

Griggs International Academy (Griggs) is your trusted, accredited SDA online school. We provide flexible, tailored educational solutions for students and partner schools.

Our self-paced, asynchronous curriculum, enhanced by selective synchronous elements, allows cohort groups to learn at their own pace while benefiting from meaningful rigor, interaction and support.

Partnering with NAD Schools, Griggs offers the APLE Program to expand class offerings and grade levels. Courses are managed by certified SDA teachers who provide academic oversight and schedule one-on-one student check-ins at key milestones. Whether supporting summer learning, credit recovery, bridging gaps, or seeking a full NAD-approved curriculum, Griggs is here to help.

Also available is our on-site instruction model, where courses are taught fully onsite by the partner school's properly certified teachers. Griggs provides academic oversight, transcript management, and accreditation alignment, while instruction remains with the partner school.

Visit our website to explore the NAD Services section and discover how Griggs can tailor an educational journey for you.

Lamar Nangle
apledirector@andrews.edu
269-471-6638

Griggs has served well over 200,000 students!

APPROVED AND ACCREDITED BY:



2000+
STUDENTS

70+
COUNTRIES

50
STATES

30+
NAD SCHOOLS

40+
INT'L SITES

120+
YEARS

High School Diploma Plan of Study

College Preparatory Diploma

Minimum of 25 Carnegie Units*

Grade 9	UNITS
Bible I	1
English I	1
Algebra I	1
Business and Technology	1
Science.....	1
Physical Education (any year)	½
Additional course	½
Community Service ^a	0
Grade 10	
Bible II.....	1
Biology	1
English II	1
Geometry ^a	1
History & Social Science	1
Fine Arts	½
Health	½
Independent Physical	
Fitness ^a (any year)	½
Community Service ^a	0
Grade 11	
Bible III	1
American Literature	1
U.S. History	1
Algebra II ^a	1
Modern Language	1
Chemistry/A&P	1
Fine Arts	½
Community Service ^a	0
Grade 12	
Bible IV.....	1
British & World Literature	1
U.S. Government	½
History & Social Science	½
Math	1
Chemistry/A&P.....	1
Modern Language	1
Community Service ^a	0
SAT/ACT test scores.....	0

- ^a A minimum of 20 hours of community service each year with Griggs.
- ^a University/Dual credit—approval of qualifications and educational site by Griggs high school advisor necessary prior to enrollment
- ^a Algebra I or its equivalent must be completed before Geometry or Algebra II may be taken.
- ^a Students MUST complete Griggs's Physical Education course before enrolling in the Independent Study Physical Fitness course.
- * Carnegie Unit = five 45–60-minute class periods per week for an 18-week term (60 hours) = 0.5 of credit per semester.

Standard Diploma

Minimum of 21 Carnegie Units*

Grade 9	UNITS
Bible I	1
English I	1
Algebra I	1
Business and Technology	1
Science.....	1
Physical Education (any year)	½
Community Service ^a	0
Grade 10	
Bible II.....	1
English II	1
History & Social Science	1
Algebra I/Geometry ^a	1
Biology	1
Independent Physical	
Fitness ^a (any year)	½
Community Service ^a	0
Grade 11	
Bible III	1
American Literature	1
U.S. History	1
Algebra II/Geometry ^a /Math	1
Science	1
Health	½
Community Service ^a	0
Grade 12	
Bible IV.....	1
British Literature	1
U.S. Government	½
History & Social Science.....	½
Fine Arts	1
Additional course	½
Community Service ^a	0

Additional Course Options

Business and Technology

Coding I.....	½
Coding II	½
Digital Media I	½
Digital Media II	½
Principles of	
Information Technology.....	1

Fine Arts

Art in World Cultures	½
Culinary Arts	½
Fashion and Interior Design.....	½
Fine Arts Independent Study.....	½
Music Appreciation.....	½
Photography I	½

Health and Physical Education

Physical Fitness (Independent Study).....	½
---	---

History and Social Sciences

African American History.....	½
Criminology	½
Economics	½
Holocaust History	½
World History	1
Human Geography AP	1

Mathematics

Consumer Math	1
Survey of Math	1
PreCalculus	1

Modern Languages

American Sign Language I	1
American Sign Language II	1
Spanish I.....	1
Spanish II	1

Sciences

Anatomy and Physiology (A&P)	1
Chemistry	1
Earth Science	1
Forensic Science I.....	½
Forensic Science II.....	½
Physical Science	1

College & Career

Entrepreneurship	½
Keyboarding ^a	½
Preparing for College	
and Career	½

(Course offered through Adventist Learning Community)

Progress reports are sent to the school, parents, and students every Friday

School personnel and facilitators must meet for Griggs training and orientation

SPECIAL DISCOUNT FOR 7TH & 8TH GRADERS
EARN ADVANCED CREDITS:

American Sign Language High school credit

Algebra I Dual credit



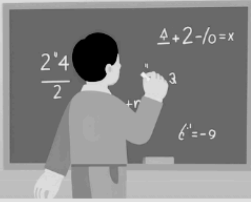
ADVANCED
Grades 7-8
STUDENTS

ALGEBRA I

&

AMERICAN
SIGN
LANGUAGE

High School credit for NAD Junior High students ... at a discount.



← Tuition: \$415 →
← eBook: \$ 35 →

Submit letter of recommendation
from principal or teacher

Be supervised by NAD teacher at
school during regular class period



Full time JH Students at Griggs or
other NAD Schools can take Algebra I
for high school credit

ASL counts as a modern language in high
school. You can start earning credits early.

Submit standardized test showing a
score of 85% or higher.

Submit a grade report showing a grade
of "A" for prior math course.

Submit a grade report showing above
average grades.



269-471-6638



APLEdirector@andrews.edu

Additional Services

- Credit Recovery Courses
- University of California Approved Courses
- Advanced Courses
- Summer cohort math classes (Live)
- Bundle pricing for large groups
- Standardized Testing
- Exam Proctoring

K-8 Services

Griggs APLE was designed to cater primarily to NAD schools seeking to enrich their educational offerings with high school classes or grade levels. As educational needs have evolved, the demand for Griggs services in K-8 schools has been on the rise, whether due to staffing requirements or as a transitional step towards becoming a full-fledged NAD K-8 institution.

Our Accredited Program for Learning Environments (APLE) addresses the specific challenges faced by schools lacking subject area teachers at the junior high level, offering a viable solution that ensures a comprehensive curriculum for all students. While there are a few schools that choose to adopt Griggs for their complete K-8 NAD school program, this remains less common, primarily due to the need for a higher-level of instruction and supervision.

At the heart of APLE lies a strong commitment to empower NAD schools with the tools and resources necessary to meet the ever-growing demands of their student body. By providing tailored educational solutions, Griggs APLE opens doors to endless possibilities, fostering academic growth and success for both schools and students.

**The K-8 Scope and Sequence
can be reviewed on the website**

Wendy Baldwin
Griggs K-8 Director
GriggsK-8@andrews.edu
471-269-6549



(NAD) K-8 APLE SCHOOL TUITION & FEES

Prices listed reflect current rates and are subject to change

School Application Fee	\$ 200 annually
Per Student Fees*	
Enrollment Fees (K-5)	\$30
Enrollment Fees (6-8)	\$50
Grades K-5 Tuition	\$105 per course/full year
Grades 6-8 Tuition	\$170 per course/full year
Books (online bookstore)	\$Varies

**Prices for NAD Schools with SDA ORG ID#*

APLE: Grades K-5

Griggs's Elementary APLE serves NAD grades K-5 schools to help them offer an accredited program. School takes place in a traditional setting using a traditional school year calendar. An instructional guide is provided within each Griggs course, and the locally-hired facilitator will use this guide to prepare, teach and deliver instruction to the students. The facilitator will also grade daily assignments and monitor learning, as well as work with the local conference, church, and school families. Designated tests and projects are uploaded to an online dropbox for grading by Griggs. Once students have completed their grade-level requirements, report cards will be issued by Griggs.

APLE: Grades 6-8

Griggs Junior High (JH) APLE serves NAD schools to offer accredited curriculum and specific grade 6-8 courses, such as Bible or math, to prepare students for high school. School takes place in a traditional setting using a traditional school year calendar. JH students will need oversight from a locally-hired facilitator. Instruction is delivered via online modules that are written for students to read, understand, and complete. JH courses have Griggs teachers who can provide feedback and answer questions. Students will use their computers to access modules, content, upload assignments to dropboxes, and take tests proctored by the local facilitator. The facilitator is responsible to ensure the students understand their assignments, are making good progress, and they grades daily student work. Once students have completed their grade level requirements, report cards will be issued by Griggs.

CONTACT

**Director of NAD Services &
Griggs Vice Principal
Lamar Nangle**

apledirector@andrews.edu
269-471-6638



**Assistant to
Director of NAD Services
Lorin Koch**

kochl@andrews.edu



LEARN MORE

WWW.GRIGGS.EDU

**Associate Principal &
Griggs Registrar
Jeannie Leiterman**

registrargia@andrews.edu
269-471-6559



**Serving NAD Schools is an important part of our
ministry. Let us know how we can serve YOU!**

**Find the APLE Packet on the Griggs website
(scan the QR Code on the back cover)**



GRIGGS

INTERNATIONAL ACADEMY

- ★ *Seventh-day Adventist*
- ★ *K-12 online education*
- ★ *Accredited*
- ★ *Open enrollment*
- ★ *Self-paced study*
- ★ *Optional synchronous activities*
- ★ *Flexible to fit Cohort schedule*

